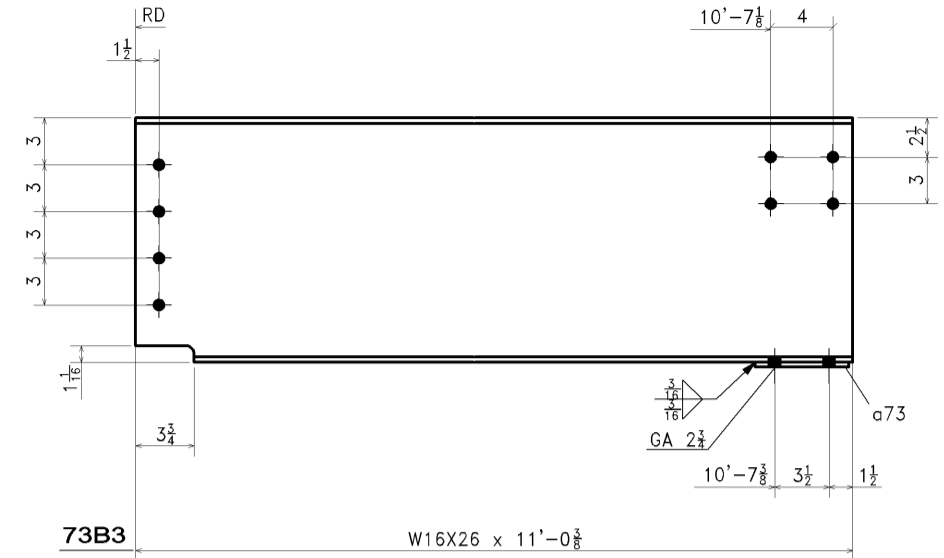


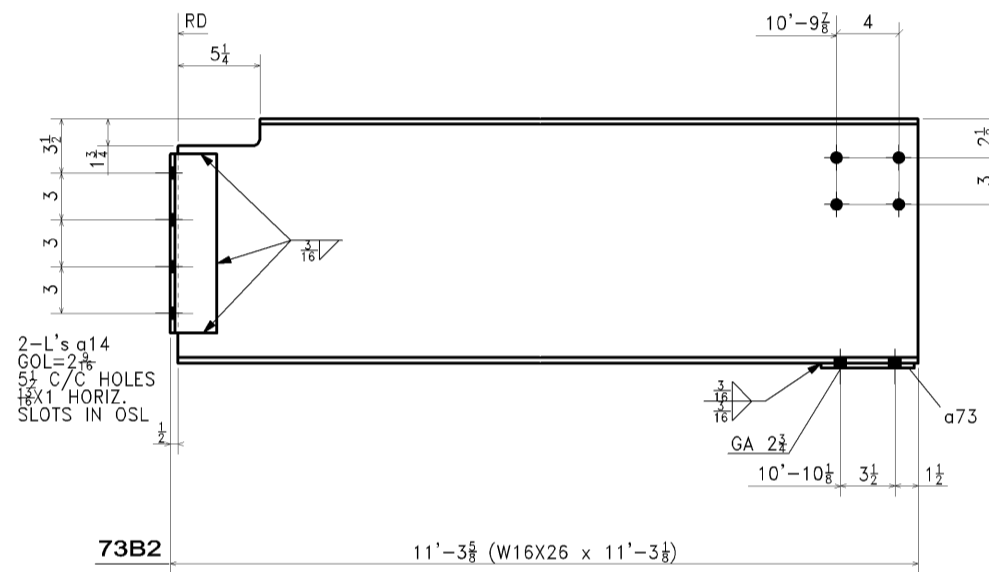
2 ~ BEAM ~ 73B1

MAIN MARK	T.O.S. ELEVATION	GRID LOCATION
73B1	113'-11 1/2"	7.6-8/C.3-B.7
73B1	113'-11 1/2"	7.6-8/B.7-B.1



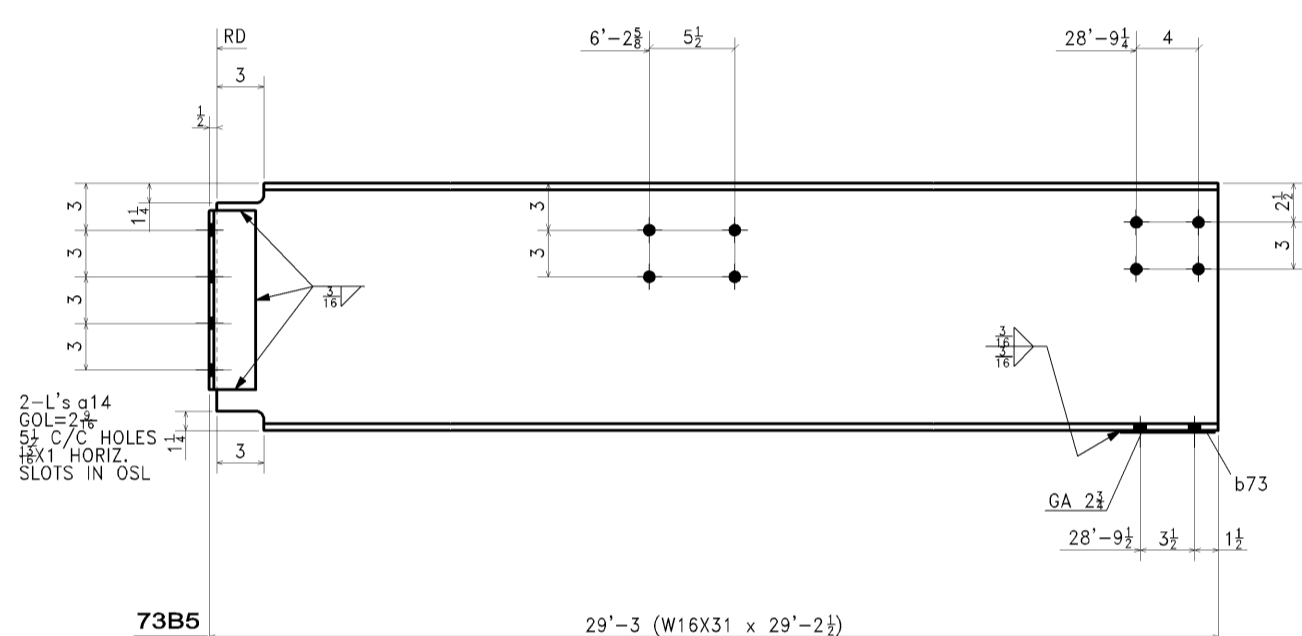
1 ~ BEAM ~ 73B3

MAIN MARK	T.O.S. ELEVATION	GRID LOCATION
73B3	113'-11 1/2"	7.6-8/C.5



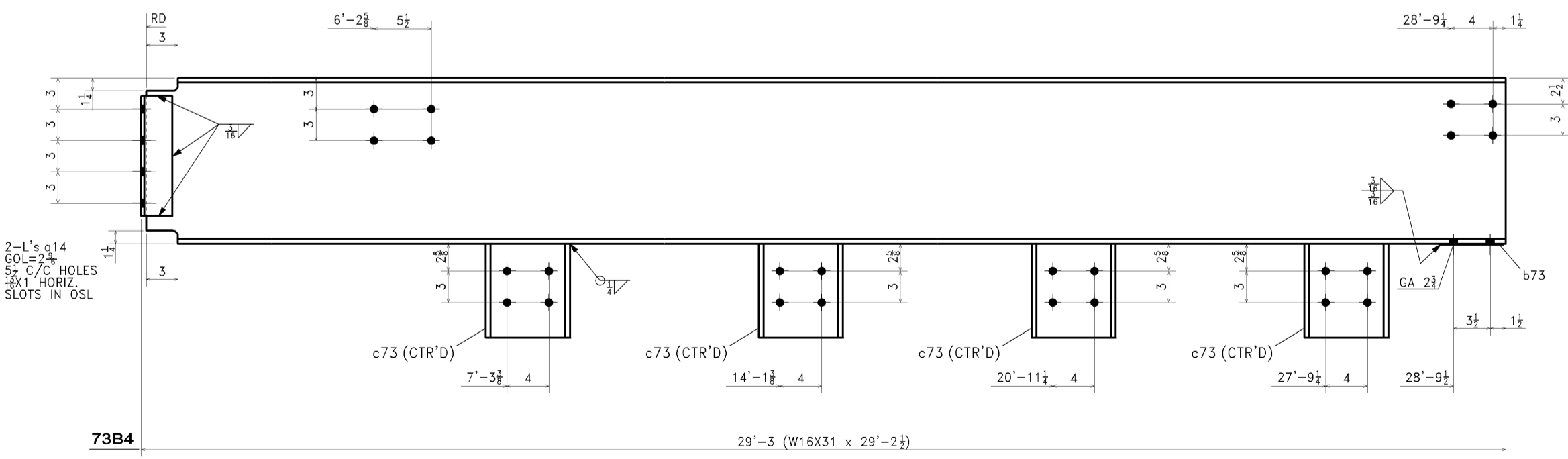
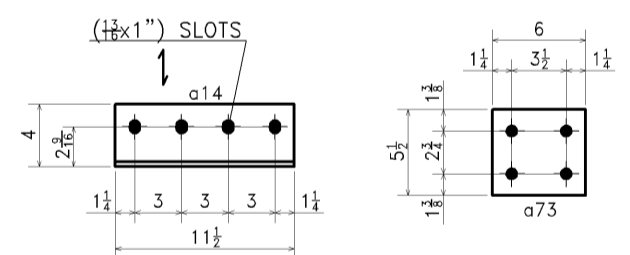
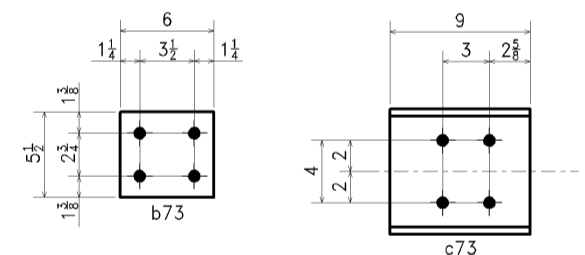
1 ~ BEAM ~ 73B2

MAIN MARK	T.O.S. ELEVATION	GRID LOCATION
73B2	113'-11 1/2"	7.6-8/D.6-C.5



1 ~ BEAM ~ 73B5

MAIN MARK	T.O.S. ELEVATION	GRID LOCATION
73B5	113'-11 1/2"	7-8/E.5-D.6



1 ~ BEAM ~ 73B4

MAIN MARK	T.O.S. ELEVATION	GRID LOCATION
73B4	113'-11 1/2"	7-8/E.5

SEQUENCE			BILL OF MATERIAL						
3	2	1	SHIP MARK	PIECE MARK	NO. REQ'D	SIZE	LENGTH	TOTAL WEIGHT	REMARKS
2	0	0	73B1		2	W16X26	11'-3 3/16"	588.9	A992
				a14	4	L4X3X5/16	0'-11 1/2"	27.3	A36
				a73	2	PL5/16X5 1/2	0'-6"	5.8	A36
1	0	0	73B2		1	W16X26	11'-3 1/8"	294.3	A992
				a14	2	L4X3X5/16	0'-11 1/2"	13.6	A36
				a73	1	PL5/16X5 1/2	0'-6"	2.9	A36
1	0	0	73B3		1	W16X26	11'-0 3/8"	288.3	A992
				a73	1	PL5/16X5 1/2	0'-6"	2.9	A36
1	0	0	73B4		1	W16X31	29'-2 1/2"	906.5	A992
				a14	2	L4X3X5/16	0'-11 1/2"	13.6	A36
				b73	1	PL1/8X5 1/2	0'-6"	1.2	A36
				c73	4	W8X28	0'-9"	84.2	A992
1	0	0	73B5		1	W16X31	29'-2 1/2"	906.5	A992
				a14	2	L4X3X5/16	0'-11 1/2"	13.6	A36
				b73	1	PL1/8X5 1/2	0'-6"	1.2	A36
TOTAL WEIGHT								3151	

TOTAL QTY.	FIELD BOLTS	MAIN MARK	LENGTH
4	3/4" DIA. A325N_TC	73B1	1 3/4"
8	3/4" DIA. A325X_TC	73B1	2 1/4"
8	3/4" DIA. A325N_TC	73B2	1 3/4"
4	3/4" DIA. A325X_TC	73B2	2 1/4"
4	3/4" DIA. A325X_TC	73B3	2 1/4"
8	3/4" DIA. A325N_TC	73B4	1 3/4"
4	3/4" DIA. A325X_TC	73B4	2"
8	3/4" DIA. A325N_TC	73B5	1 3/4"
4	3/4" DIA. A325X_TC	73B5	2"

ALL WF MATERIAL ASTM A992
ALL OTHER MATERIAL A36 U.N.O.



<input checked="" type="checkbox"/> APPROVAL ONLY <input type="checkbox"/> FIELD USE <input type="checkbox"/> ERECTION <input type="checkbox"/> FILE & DISTRIBUTION <input checked="" type="checkbox"/> SHOP USE	5/06/05 7/06/05 7/7/05	TUBING - ASTM A500, GR B PIPE - ASTM A53, GR B BOLTS - 3/4" DIA. A325N HOLES - 1/2" DIA. U.N.O. WELD - E70XX ELECTRODES (LOW HYDROGEN FOR GRADE 50 STEEL) PAINT - NONE (EXCLUDE PAINT ON GALV. ANON-FERR. MATERIAL) SURFACE PREP - NONE	FABRICATORS OF STRUCTURAL STEEL SUPPLIERS OF STEEL JOISTS AND METAL DECK 170 FULLING MILL ROAD MIDDLETOWN, PENNSYLVANIA 17057-0350 (717) 944-1423	APPROVED BY: DRAWN BY: J.B. LONG, INC. SES 04-56 04/08/2005 CK'D BY: VAS 05/24/2005 JOB NO. 040485 SHEET NO. 73
IMPORTANT WOOLF STEEL INC. DOES NOT TAKE FIELD DIMENSIONS WHEN DRAWINGS ARE RETURNED MARKED "APPROVED". APPROVED AS NOTED OR A SIMILAR NOTATION THEY SHALL BE ENTERED INTO OUR SHOP FOR FABRICATION. ANY MISFITS OTHER THAN FABRICATION ERRORS WILL BE SOLELY THE RESPONSIBILITY OF THE CUSTOMER. WHEN RETURNING DRAWINGS FROM APPROVAL, MAKE SURE ALL QUESTIONED DIMENSIONS HAVE BEEN VERIFIED AND/OR FURNISHED. REQUESTED INFORMATION IS ENCLOSED AND DIMENSIONS HAVE BEEN CO-ORDINATED WITH THE OTHER TRADES INVOLVED. CONTRACTOR OR ERECTOR HAS ABSOLUTELY NO PERMISSION TO REFABRICATE MATERIAL WHICH WILL RESULT IN BACK CHARGE WITHOUT WRITTEN CONSENT.			PROJECT: WESTMINSTER PRESBYTERIAN CHURCH ADDITION ARCHITECT: JOHN MILNER ARCHITECTS, INC. CONTRACTOR: ARTHUR FUNK & SONS, INC.	