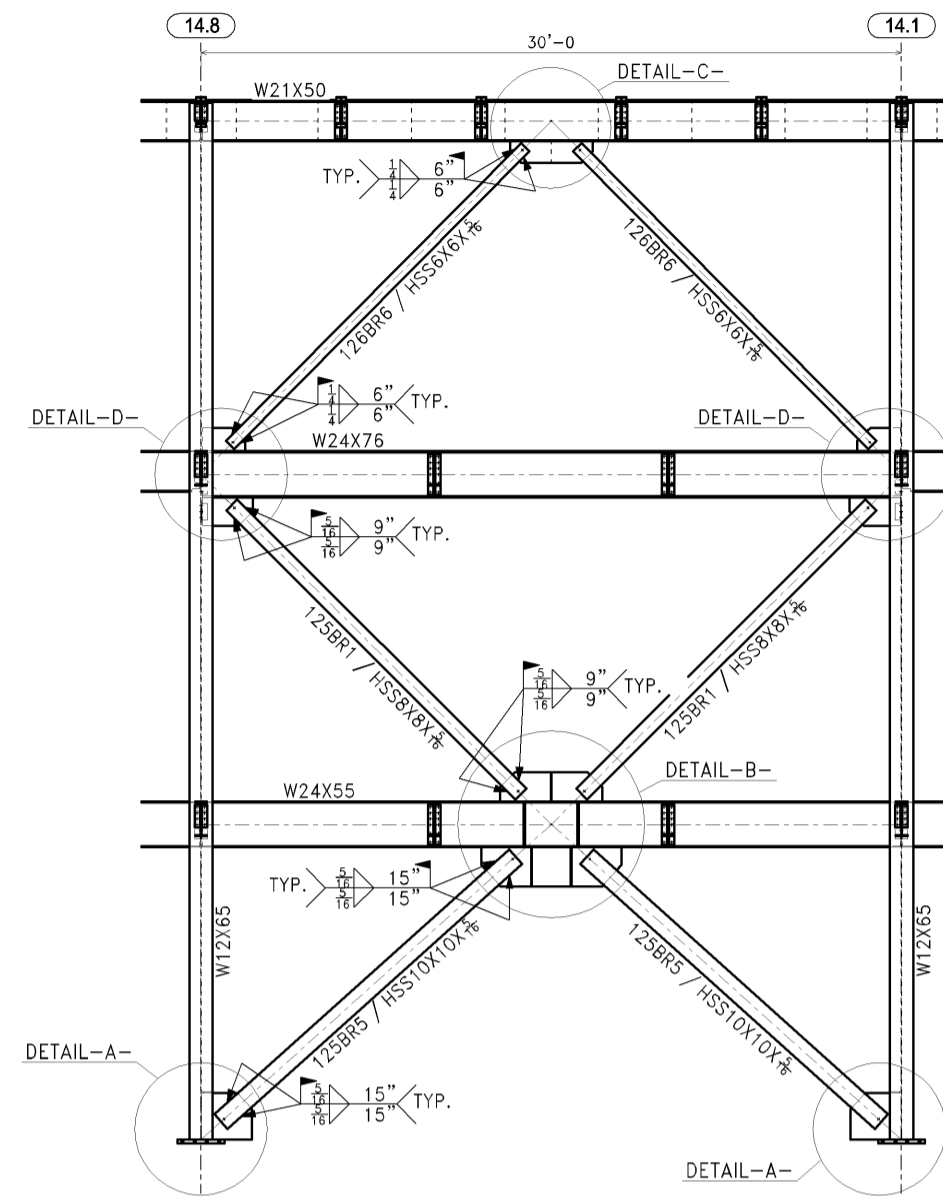
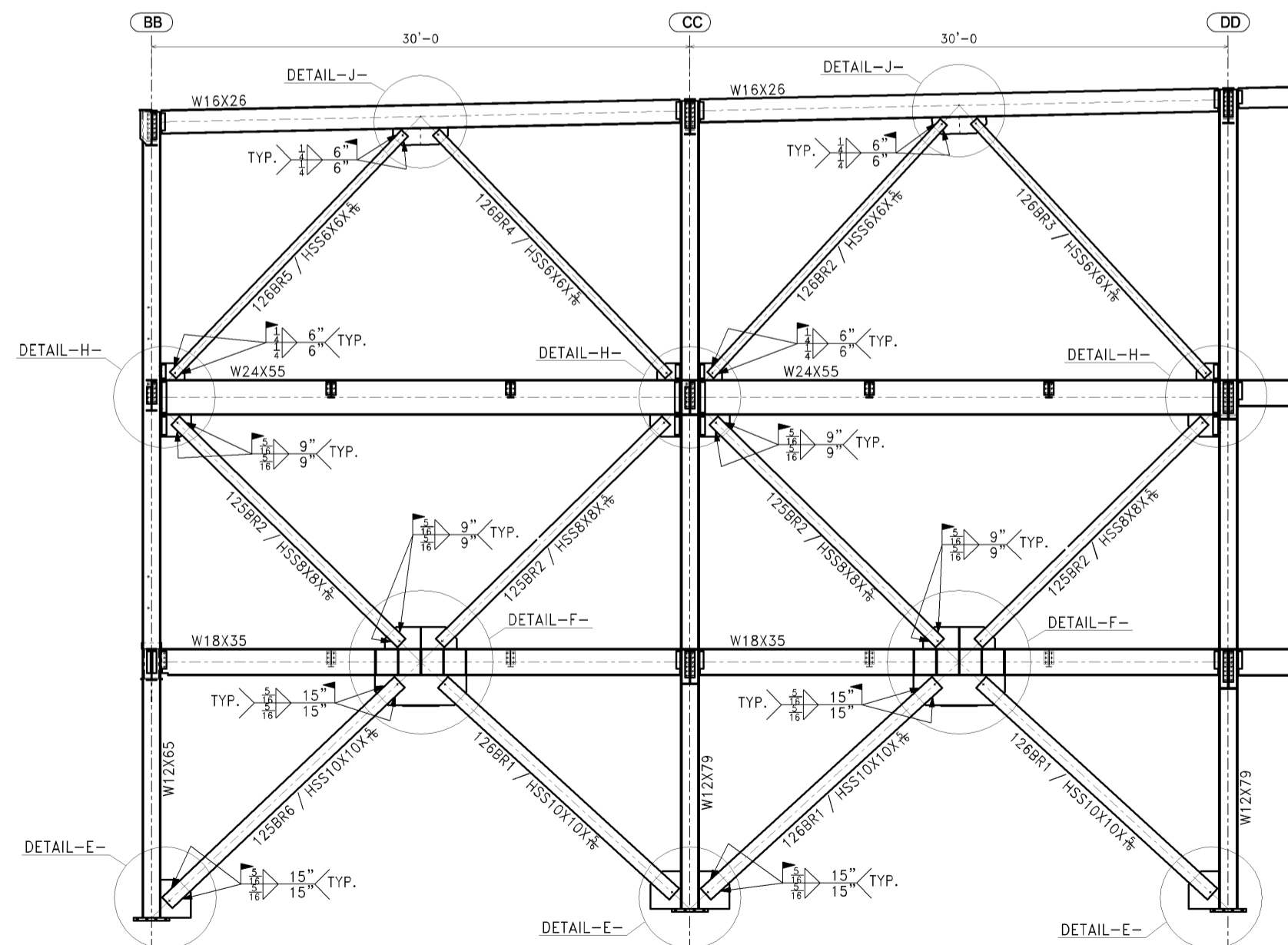


BRACING @ COLUMN LINE -BB-



BRACING @ COLUMN LINE -GG-



BRACING @ COLUMN LINE -13.3-



**GENERAL NOTES:**

- WF MAT'L - ASTM A992
- ALL OTHER MAT'L - ASTM A36
- TUBING - ASTM A500, GR B
- PIPE - ASTM A53, GR B
- BOLTS - 3/4" DIA. A325
- HOLES - 13/16" DIA. U.N.O.
- WELD - E70XX ELECTRODES (LOW HYDROGEN FOR GRADE 50 STEEL)
- PAINT - NONE (EXCLUDE PAINT ON GALV.&NON-FERR. MATERIAL)
- SURFACE PREP - SSPC-SP 3

QUAN	DISTRIBUTION	DATE	#	DESCRIPTION	DATE
1P	SZOKE-APP'L	3/28/05			
4P	BUTZ-APP'L	3/28/05			
1P	SZOKE-APP'L	2/21/05			
4P	BUTZ-APP'L	2/21/05	1	PER APPL/CHECKING	3/28/05

PRINT RECORD      REVISIONS

JOB NAME: OLYMPUS AMERICA, INC.  
 NEW HEADQUARTERS  
 LOCATION: CENTER VALLEY, PA  
 CUSTOMER: ALVIN H. BUTZ, INC.  
 DESIGNER: EWING COLE

DRAWN BY: J.B.LONG, INC      CHECKED BY:      DATE: 2/21/05  
 HM 04-75

JOB# 1510-D      DRAWING# E9-D 1

**SZOKE BROTHERS, INC.**  
 STRUCTURAL STEEL & MISC. IRON - FABRICATION & ERECTION  
 8649 PAINT MILL ROAD, SLATINGTON, PA 18080 (610) 760-0588 FAX (610) 760-9066

**STB**