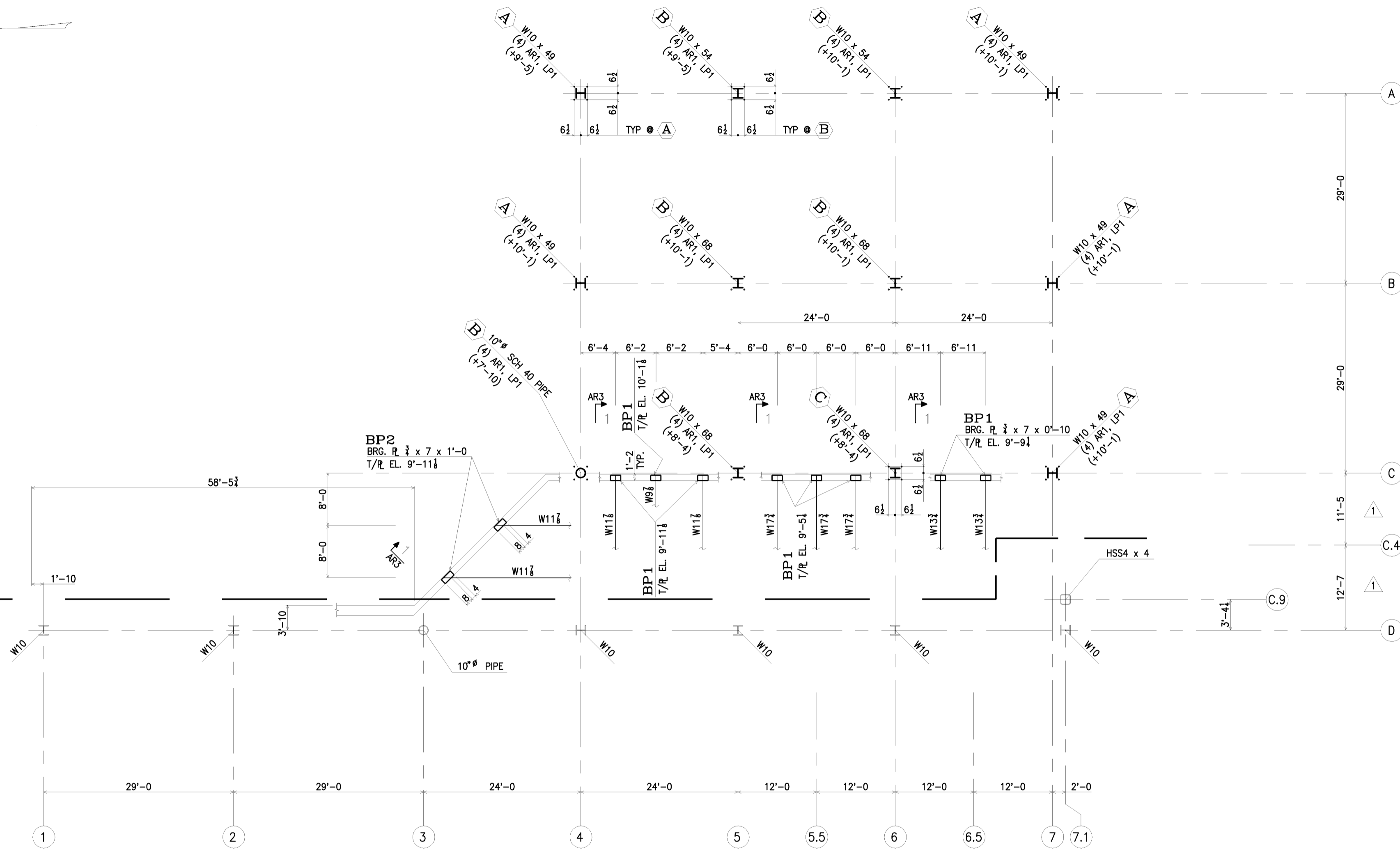
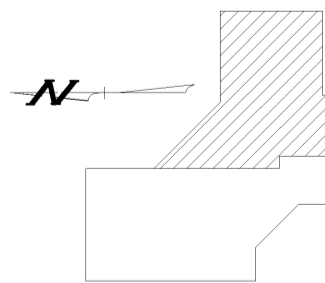


MATCH LINE  
SEE DWG. AR1



**PART. ANCHOR ROD/EMBED. PLAN**

1. TOP OF FIN. FLOOR EL. 0'-0.
2. BOTT. OF BASE P. EL. FROM 0'-0  
SHOWN THUS (+...) ON PLAN.
3. (X) INDICATES COL. BASE P. DETAIL.
4. USE LEV. P. AS A TEMPLATE WHEN SETTING ANCH. RODS.
5. TOP OF STEEL ELEV. +10'-11 TYP. U.N.O.
6. ALL BEAM BRG. P's TO BE CTR'D. ABOUT BEAM U.N.O.



**KEY PLAN**



**GENERAL NOTES:**

- WF MAT'L - ASTM A992
- ALL OTHER MAT'L - ASTM A36
- TUBING - ASTM A500, GR B
- PIPE - ASTM A53 or A501 GR B
- BOLTS - 1/2" DIA. A325
- HOLES - 1/8" DIA. U.N.O.
- WELD - E70XX ELECTRODES (LOW HYDROGEN FOR GRADE 50 STEEL)
- PAINT - SEE DRAWING #1 (EXCLUDE PAINT ON GALV.&NON-FERR. MATERIAL)
- SURFACE PREP - SSPC-SP 2

REV	DESCRIPTION	DATE	BY	APP'D
1P	SZOKE - REFERENCE	7/28		
4P	NORTH STAR - FIELD	7/28		
1P	SZOKE - REFERENCE	7/12	2	PER APPR'L RET. OF DETAILS
4P	NORTH STAR - APPROVAL	7/12	1	PER APPROVAL RETURN
4P	NORTH STAR - APPROVAL	7/12	1	PER APPROVAL RETURN
QUAN	DISTRIBUTION	DATE	#	DESCRIPTION
PRINT RECORD		REVISIONS		

JOB NAME: COORDINATED HEALTH SYSTEMS  
 LOCATION: HIGHLAND AVENUE CAMPUS  
 CUSTOMER: NORTH STAR CONST. MGMT.  
 DESIGNER: BONSAI SHAFFERMAN/D. SCOTT BIGLEY

DRAWN BY: J.B.LONG, INC. CHECKED BY: CEP DATE: 7/8/04  
 RJS 04-38 7/12/04

JOB# 1499 DRAWING# AR2

**SZOKE BROTHERS, INC.**  
 STRUCTURAL STEEL & MISC. IRON-FABRICATION & ERECTION  
 8649 PAINT MILL ROAD, SLATINGTON, PA 18080 (610) 760-0588 FAX (610) 760-9066

