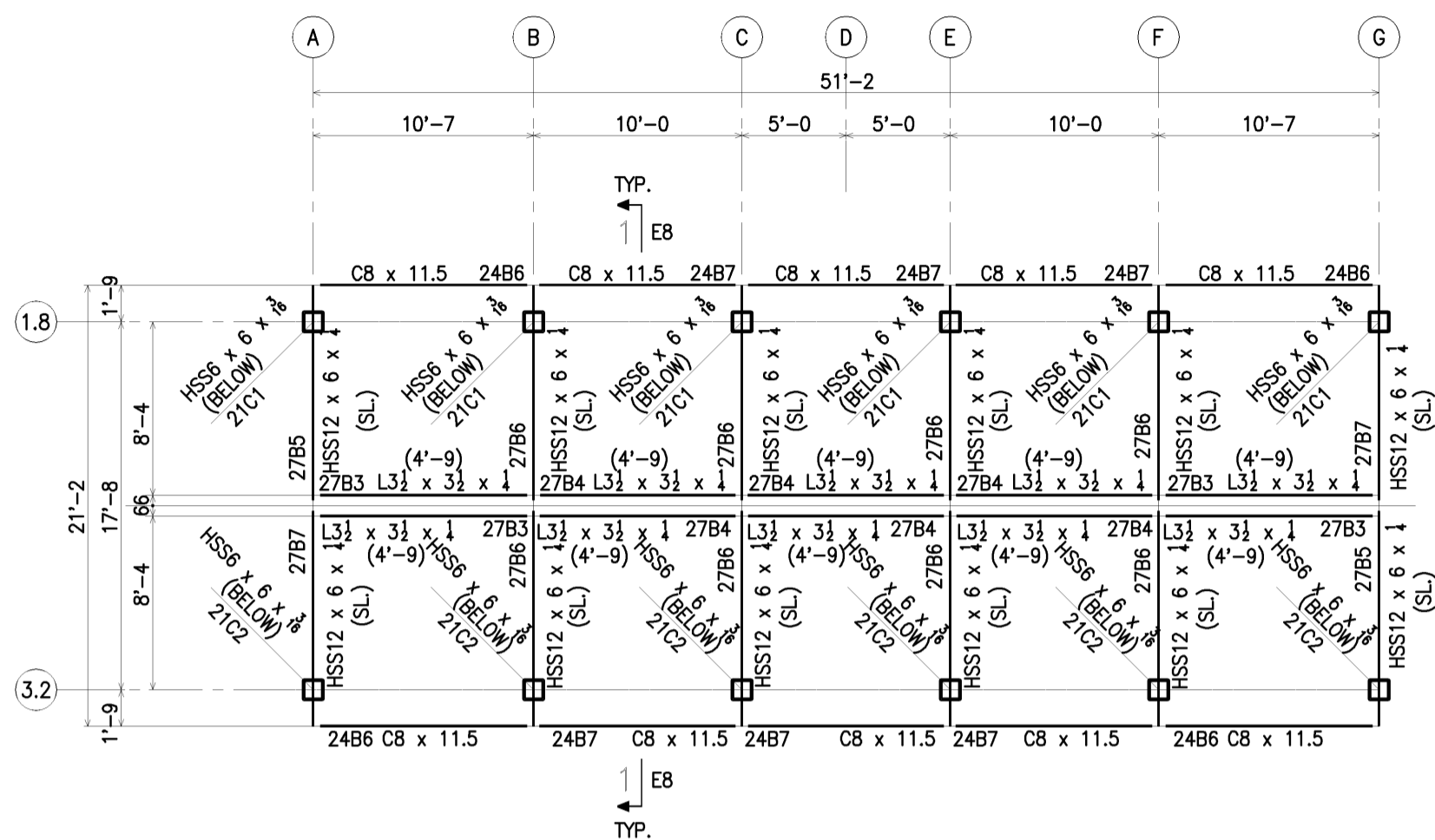


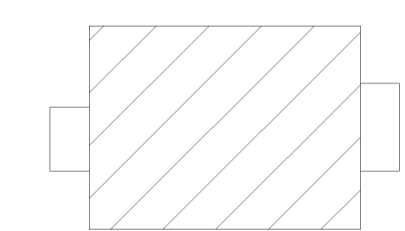
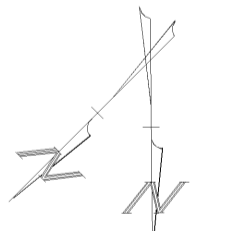
LOW ROOF FRAMING PLAN

1. TOP OF STEEL EL. 402'-0 1/2 TYP.
2. TOP OF STEEL EL. FROM EL. 402'-0 1/2 SHOWN THUS (+...) ON PLAN.
3. ALL BOLTS TO BE 3/4" A325N U.N.O.
4. ALL CONN'S. FOR BEAMS SEE E11
5. WELDS PER AISC TABLE J2.4. UNLESS LARGER SHOWN ON DRAWINGS.
6. (SL.) = SLOPING BEAM.



HIGH ROOF FRAMING PLAN

1. TOP OF STEEL EL. 416'-0 1/2 TYP.
2. TOP OF STEEL EL. FROM EL. 416'-0 1/2 SHOWN THUS (+...) ON PLAN.
3. ALL BOLTS TO BE 3/4" A325N U.N.O.
4. ALL CONN'S. FOR BEAMS SEE E11
5. WELDS PER AISC TABLE J2.4. UNLESS LARGER SHOWN ON DRAWINGS.
6. (SL.) = SLOPING BEAM.



TRUE NORTH BUILDING NORTH KEY PLAN

ALL WF MATERIAL TO BE ASTM A992
ALL OTHER MATERIAL A36 U.N.O.



<input checked="" type="checkbox"/> APPROVAL ONLY <input checked="" type="checkbox"/> FIELD USE <input type="checkbox"/> ERECTION <input type="checkbox"/> FILE & DISTRIBUTION <input type="checkbox"/>	9/2/03 10/1/03 	TUBING - ASTM A500, GR. B PIPE - ASTM A53, GR. B BOLTS - 1/2" DIA. A325 HOLES - 1/8" DIA. U.N.O. WELD - E70XX ELECTRODES (LOW HYDROGEN FOR GRADE 50 STEEL) PAINT - ONE SHOP COAT GRAY PRIMER (EXCLUDE PAINT ON GALV./NON-FERR. MATERIAL) SURFACE PREP - SSPC-SP 2	WOOLF STEEL INC. FABRICATORS OF STRUCTURAL STEEL SUPPLIERS OF STEEL JOISTS AND METAL DECK 170 FULLING MILL ROAD MIDDLETOWN, PENNSYLVANIA 17057-0350 (717) 944-1423	APPROVED BY: DRAWN BY: J.S. LONG, INC. JUN 03-39 8/21/03 CHECK'D BY: DRS 9/4/03
IMPORTANT WOOLF STEEL INC. DOES NOT TAKE FIELD DIMENSIONS WHEN DRAWINGS ARE RETURNED MARKED "APPROVED". "APPROVED AS NOTED" OR A SIMILAR NOTATION THEY SHALL BE ENTERED INTO OUR SHOP FOR FABRICATION. ANY MISFEITS OTHER THAN FABRICATION ERRORS WILL BE SOLELY THE RESPONSIBILITY OF THE CUSTOMER WHEN RETURNING DRAWINGS FROM APPROVAL. MAKE SURE ALL QUESTIONED DIMENSIONS HAVE BEEN VERIFIED AND/OR FURNISHED. REQUESTED INFORMATION IS ENCLOSED AND DIMENSIONS HAVE BEEN CO-ORDINATED WITH THE OTHER TRADES INVOLVED. CONTRACTOR OR ERECTOR HAS ABSOLUTELY NO PERMISSION TO RE-FABRICATE MATERIAL WHICH WILL RESULT IN BACK CHARGE WITHOUT WRITTEN CONSENT.			PROJECT: LAUNCH COASTER FOR HERSHEY PARK	JOB NO. 030796
NO. DATE REVISIONS: 1 10/1/03 CHECKING/APPROVAL			ARCHITECT: SPIERS, McDONALD, BHARUCHA, & ROYAL	SHEET NO. E7
			CONTRACTOR: HERSHEY ENTERTAINMENT & RESORTS	